



インド洋地震・津波災害現地調査

Earthquake & Tsunami Disaster around The Indian Ocean Field Survey - Sri Lanka and Thailand -



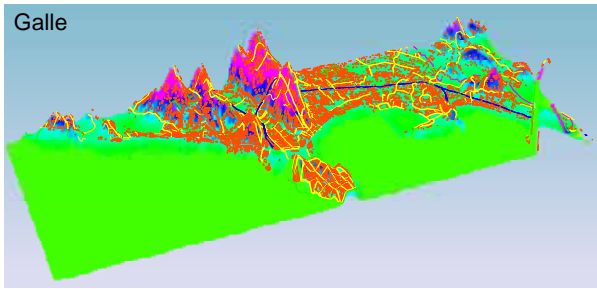
スリランカにおける現地調査



Field Survey Route (Feb.17-26,'05)



Damaged Railway Facilities, Kahawa



High Resolution Digital Elevation Map Data Acquired with Kinematic GPS



Bridge Connecting with Religious Place was Washed Away, Matara



Demolished Area, Hambantota



The Wall Pushed Down by Tsunami, Trincomalee



Erosion by Tsunami, Trincomalee

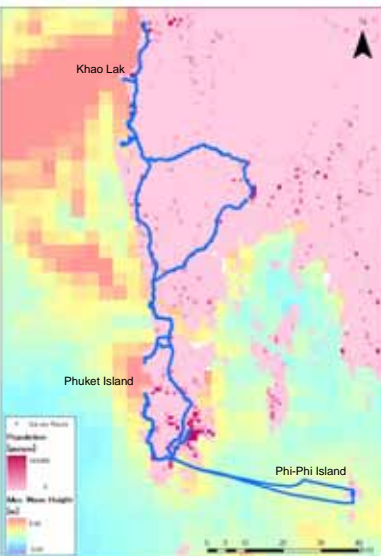


On the Border between Central Government and LTTE, Trincomalee



A Fisher's Village, Trincomalee

タイにおける現地調査



Field Survey Route (Mar.9-14,'05)



A Damaged Hotel in Phuket



Khao Lak Beach



Interview with Hotel Managers



Resort Hotels Damaged by Tsunami Wave, Khao Lak Beach, Phang-nga



Damaged Structures Undemolished, Ton Sai Area, Phi-Phi



Thailand Navy's Ships Landed by Tsunami Waves, Khao Lak

